

PROPOSED
scale 1_100

OFFICE & RESIDENTIAL
DEVELOPMENT
382 WINCHESTER ROAD
SOUTHAMPTON

Barron & Partners
CONSULTING CIVIL AND STRUCTURAL ENGINEERS
PLANNING SUPERVISORS

382 Winchester Road, Bassett, Southampton, SO16 7DH
Tel: (023) 8070 5155, Fax: (023) 8070 4333
Email: admin@barron-and-partners.co.uk
Web: <http://www.barron-and-partners.co.uk>

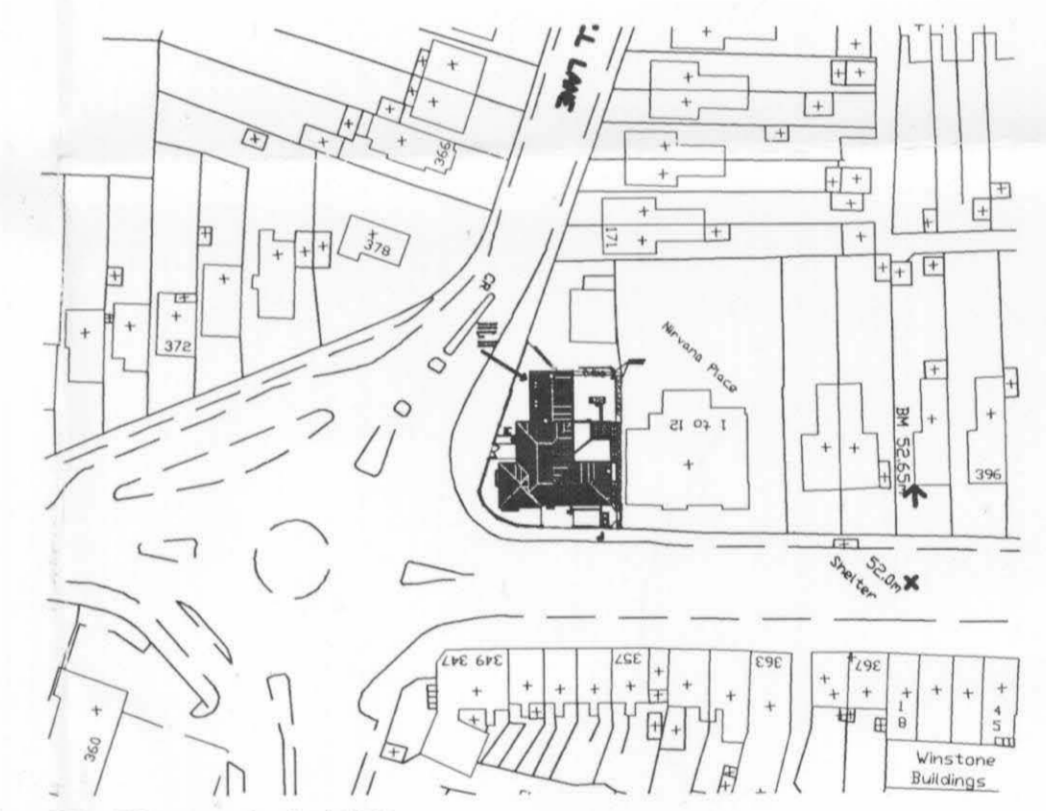
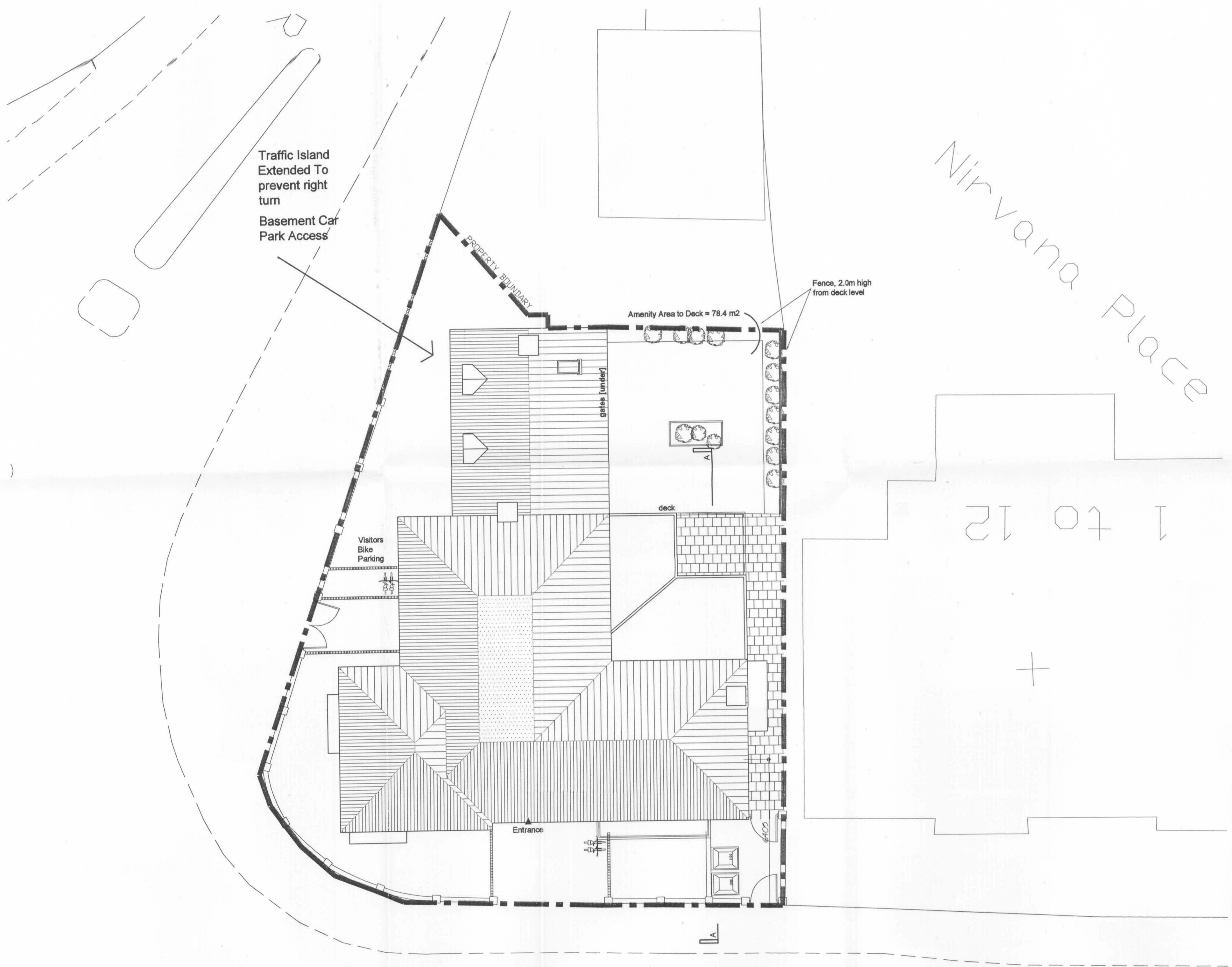
Drawing.No. 04010/001revB

PLANNING & SUBMITTAL
21 NOV 2007
DIVISION

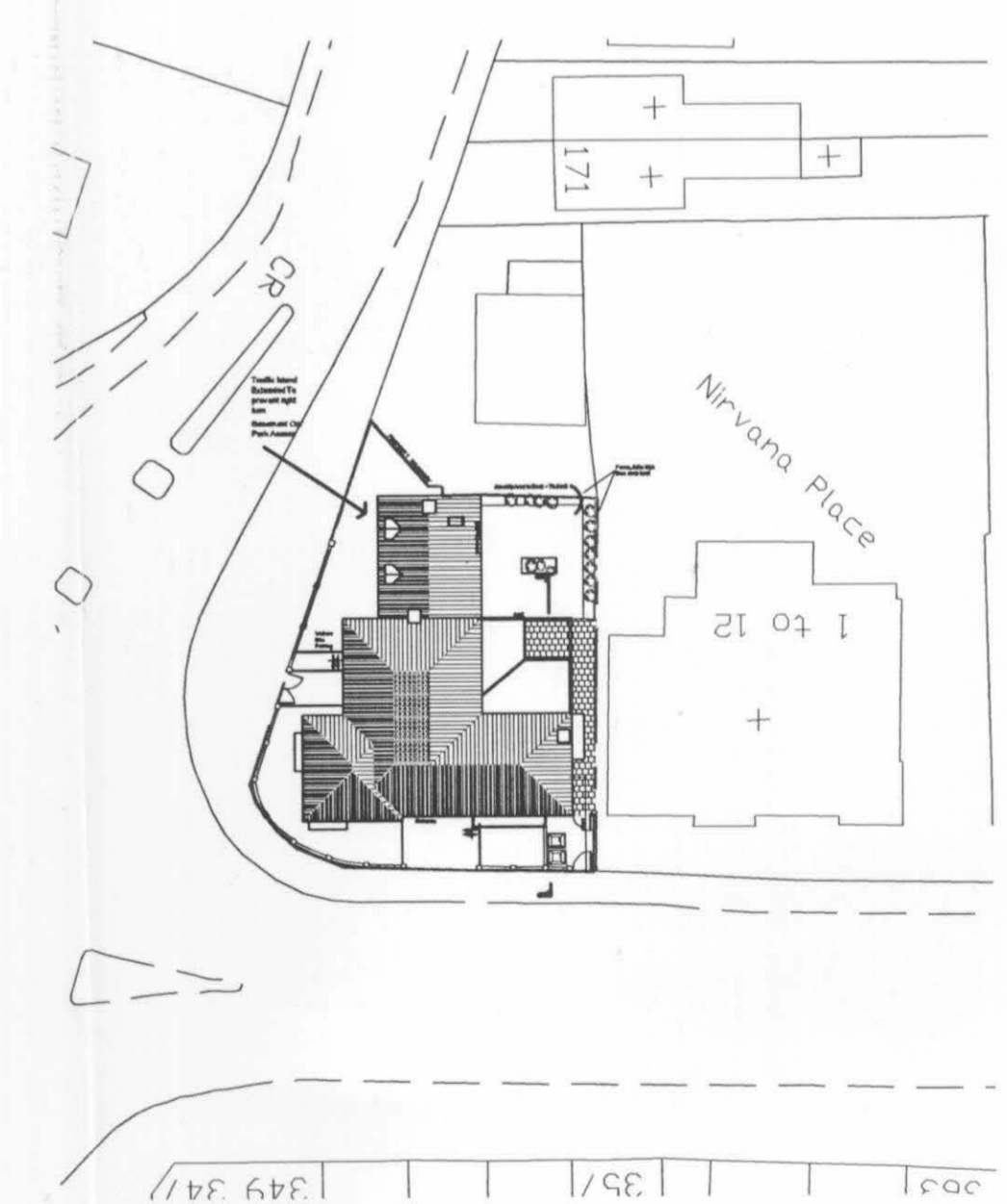
APPROVED PLAN
APP. NO. 07/01624/f0L



Amenity space to development
Total = 165 m2 including balconies
= 20 m2 per flat



Site Plan scale 1_1250



Block Plan scale 1_500

Site Plan scale 1_100

PROPOSED
scale 1_100

OFFICE & RESIDENTIAL
DEVELOPMENT
382 WINCHESTER ROAD
SOUTHAMPTON

Barron & Partners
CONSULTING CIVIL AND STRUCTURAL ENGINEERS
PLANNING SUPERVISORS

382 Winchester Road, Bassett, Southampton, SO16 7DH
Tel: (023) 8070 5155, Fax: (023) 8070 4333
E-mail: admin@barron-and-partners.co.uk
Web: http://www.barron-and-partners.co.uk

Drawing.No. 04010/002rev B



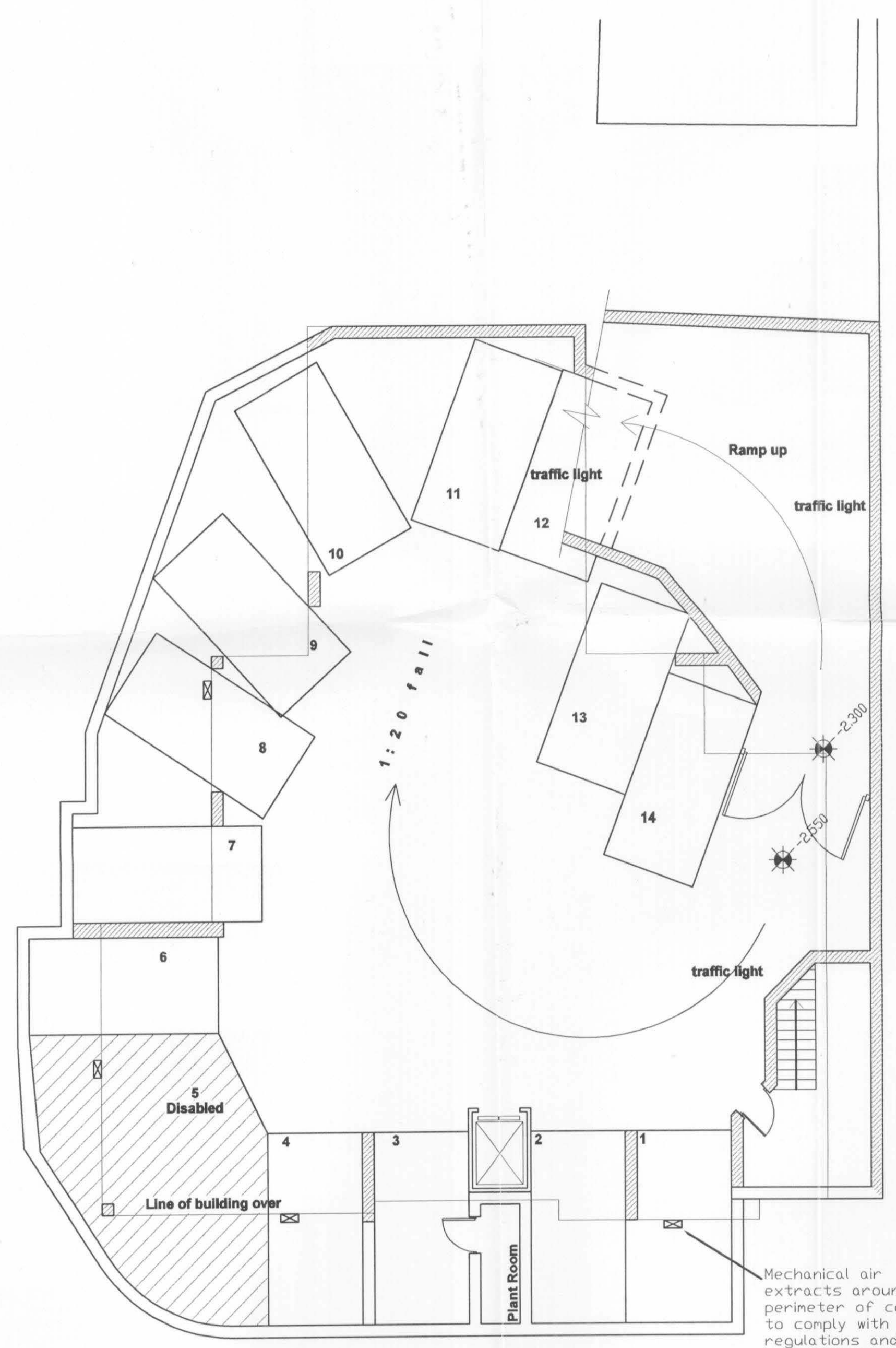
APPROVED PLAN
APP. NO. 07/01624/ful

CAR PARK TRAFFIC CONTROL SYSTEM

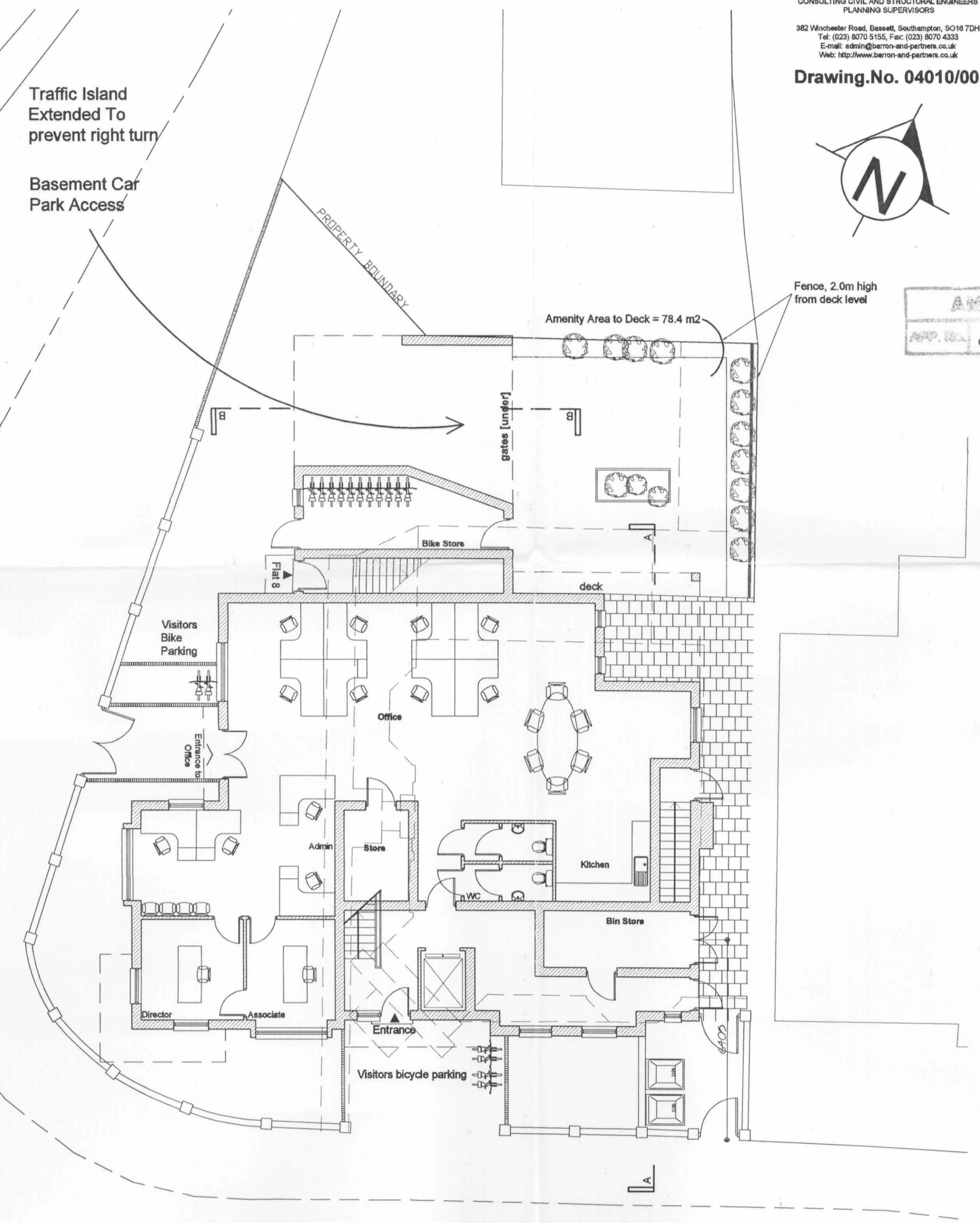
DETECTOR LOOPS ARE TO BE INSTALLED AT THE TOP OF THE RAMP AND IN THE MANEUVERING SPACE IN THE UNDERGROUND CAR PARK. THESE ARE TO BE INTERCONNECTED TO A TRAFFIC LIGHT AND SECURITY GATE SYSTEM AT THE TOP OF THE RAMP AND TRAFFIC LIGHTS IN THE UNDERGROUND CAR PARK.

IF A VEHICLE ENTERS THE TOP OF THE RAMP THEN THE LIGHT SYSTEM IN THE UNDERGROUND CAR PARK WILL SHOW RED, THUS WARNING VEHICLES NOT TO LEAVE THEIR PARKING SPACE UNTIL THE VEHICLE ON THE RAMP HAS ENTERED THE UNDERGROUND CAR PARK. THE SECURITY GATE WILL AUTOMATICALLY OPEN AS THE VEHICLE ENTERS THE RAMP AREA.

SHOULD A VEHICLE LEAVE A PARKING SPACE THEN THE LIGHTS AT THE TOP OF THE RAMP WILL SHOW RED. THE SECURITY GATE WILL ALSO REMAIN CLOSED, THUS PREVENTING VEHICLES ENTERING THE CAR PARK UNTIL THE VEHICLE FROM BELOW HAS CLEARED THE RAMP. THERE IS SPACE AT THE TOP OF THE RAMP FOR TWO VEHICLES TO PULL OFF THE ROAD WHILST WAITING TO ENTER THE CAR PARK.



Basement Plan scale 1_100



Ground Floor Plan scale 1_100

PROPOSED
scale 1_100

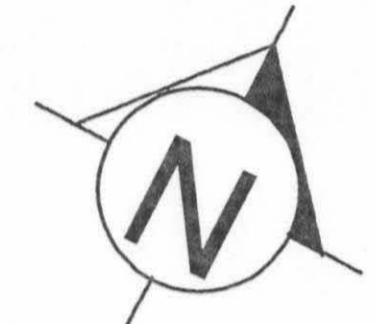
OFFICE & RESIDENTIAL
DEVELOPMENT
382 WINCHESTER ROAD
SOUTHAMPTON

Barron & Partners

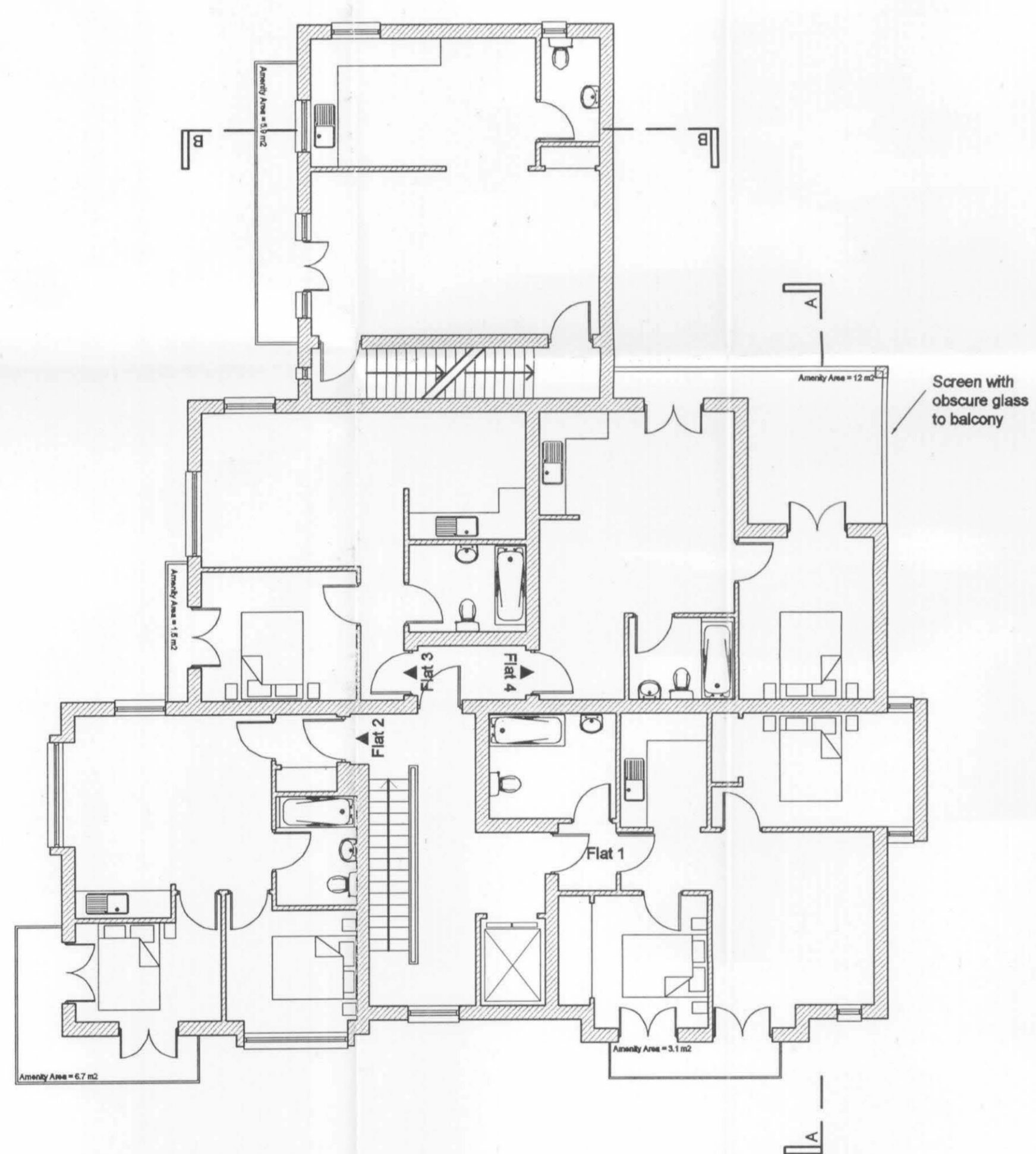
CONSULTING CIVIL AND STRUCTURAL ENGINEERS
PLANNING SUPERVISORS

382 Winchester Road, Bassett, Southampton, SO16 7DH
Tel: (023) 8070 0100; Fax: (023) 8070 4333
E-mail: admin@barron-and-partners.co.uk
Web: http://www.barron-and-partners.co.uk

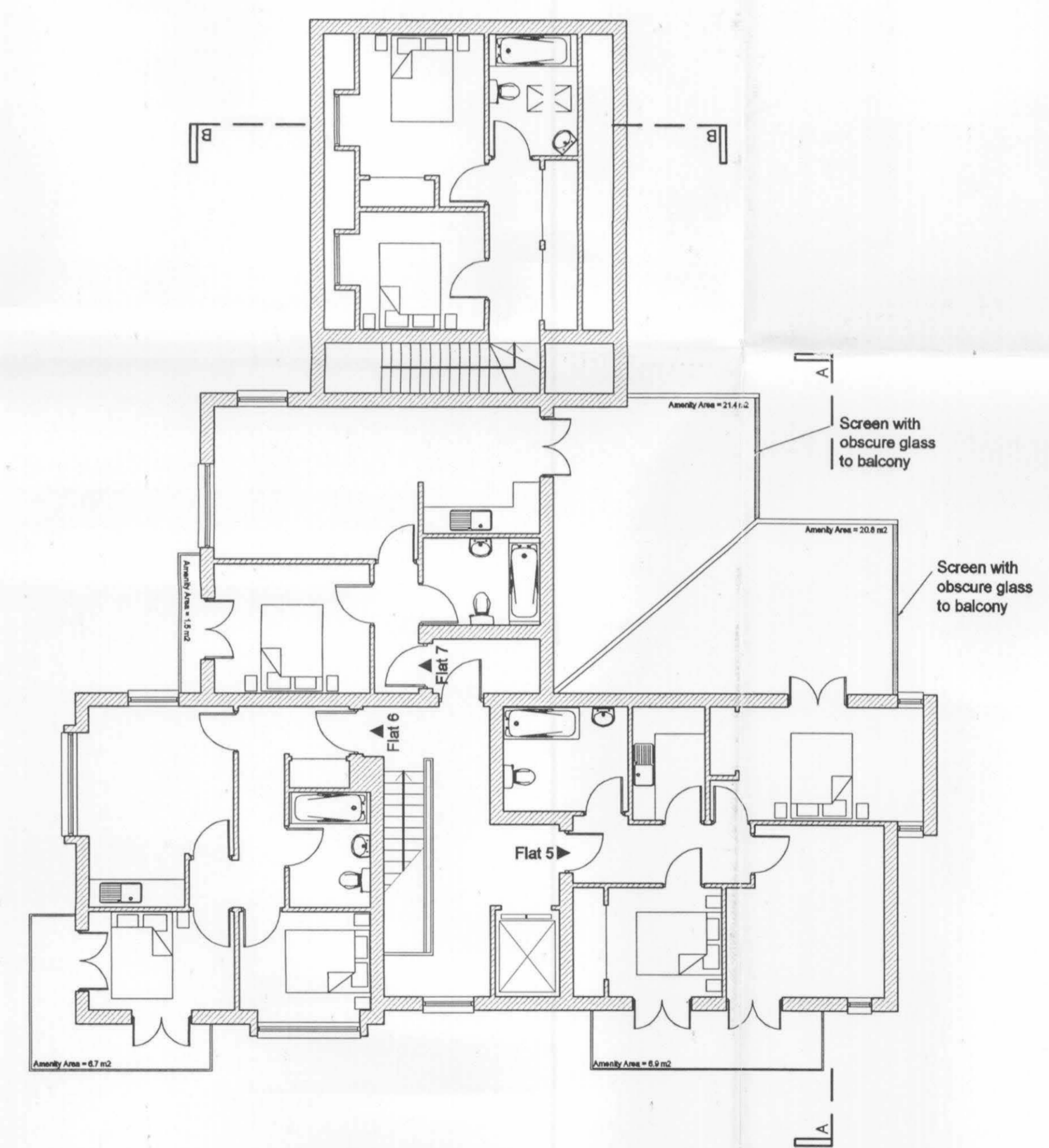
Drawing No. 04010/003revB



ARCHITECTURAL
APP. NO. 07/01624 /FUL



First Floor scale 1_100



Second Floor Plan scale 1_100



Section BB scale 1_100

PLANNING & ENVIRONMENT
21 NOV 2007
DIVISION

APPROVED PLAN
APP. NO. 07/01624 /FUL



Winchester Road scale 1_100



Hill Lane scale 1_100

171 Winchester Road

Proposed Development

Winchester Road

PROPOSED
scale 1_100

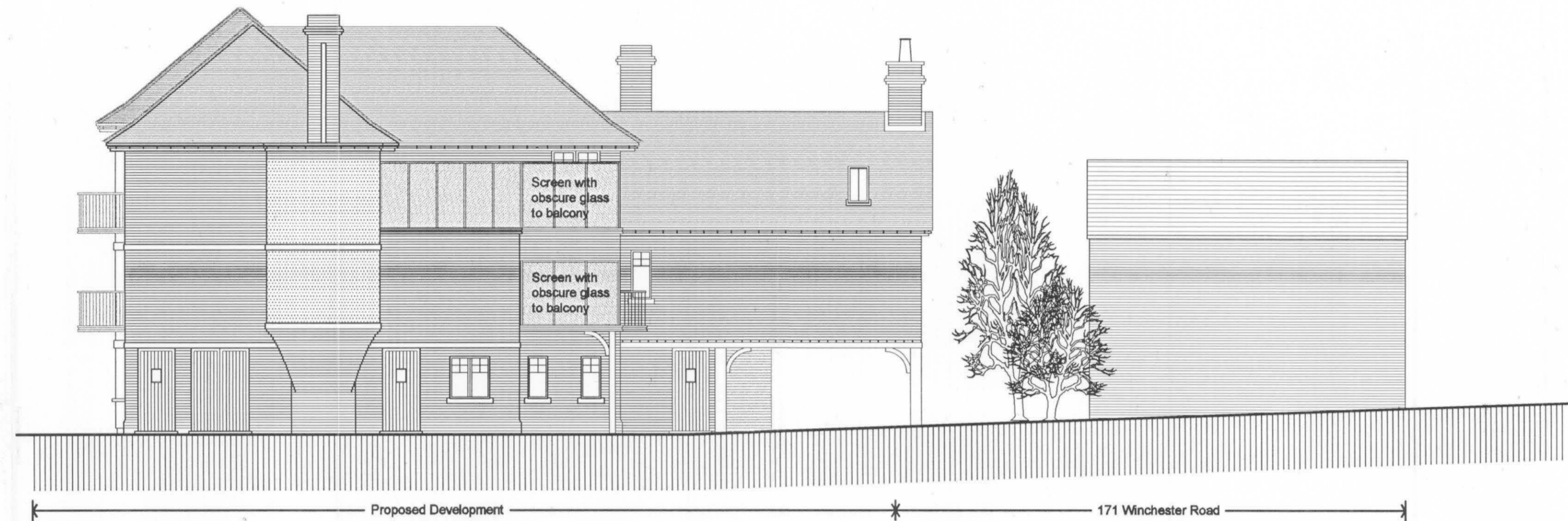
OFFICE & RESIDENTIAL
DEVELOPMENT
382 WINCHESTER ROAD
SOUTHAMPTON

Barron & Partners

CONSULTING CIVIL AND STRUCTURAL ENGINEERS
PLANNING SUPERVISORS

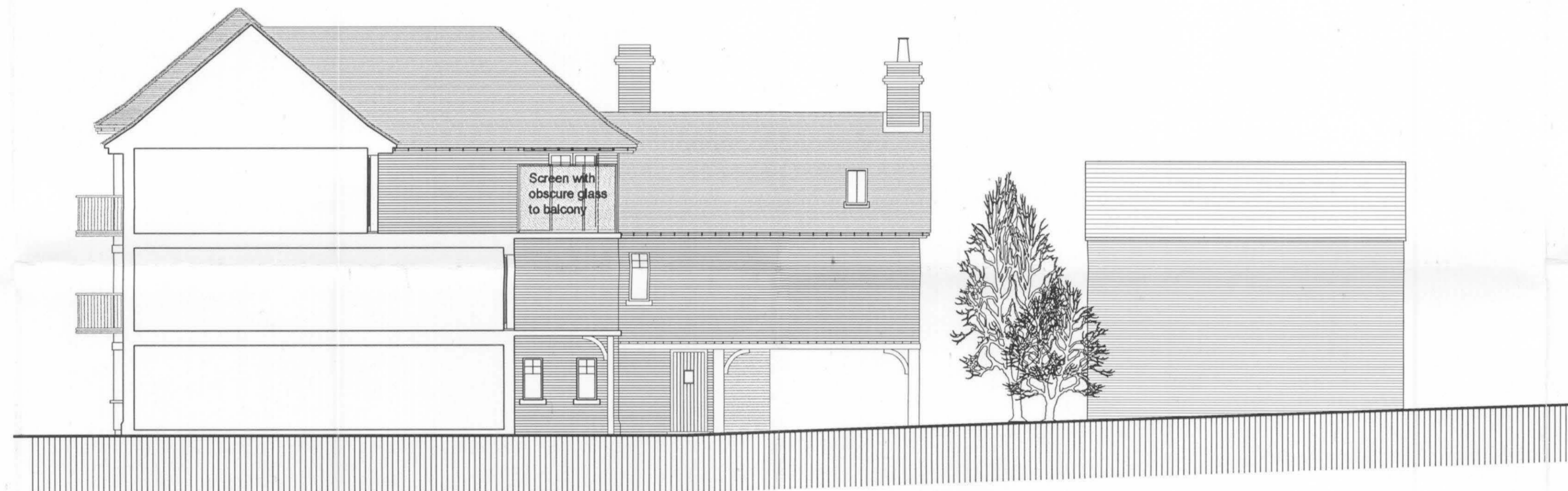
382 Winchester Road, Bassett, Southampton, SO18 7DH
Tel: (023) 8070 5155, Fax: (023) 8070 4333
E-mail: admin@barron-and-partners.co.uk
Web: <http://www.barron-and-partners.co.uk>

Drawing No. 04010/005revB



North East Elevation scale 1_100

PLANNING & CITY DEVELOPMENT
21 NOV 2007
D. WILSON



Section AA scale 1_100

APPROVED PLAN
07/01624/fuc



North West scale 1_100